



May 2020

Special points of interest:

- Village Hall Extension update
- A thank you message
- Food cupboard
- Annual parish meeting

Inside this issue:

Page 1:

Scarecrow Festival 2020
Village Hall Extension
Broadband

Page 2:

Lockdown
Car Scheme
Community Masks

Page 3:

Food Cupboard
A Big Thank You!
Volunteer Survey

Page 4:

Clap For The NHS
VE Day Celebration
Annual Parish Meeting
Trees and Hedges

Haslingfield Scarecrow Festival 2020

We are still hoping to go ahead with this year's Village Scarecrow Festival. Unless we get overtaken by events or restrictions it will take place on Saturday 12 September and Sunday, 13 September.

Please take a look at our website www.haslingfieldscarecrowfestival.org

The cancellation of so many events due to Covid-19 has been devastating for many communities and organisations, so unless it becomes inevitable that our

Scarecrow Festival cannot go ahead we would like to encourage all villagers to take part. The more home-made scarecrows can be displayed round the village, the better. The theme we have chosen is proverbs (Biblical or otherwise), but additional suggestions would be welcome. The Scarecrow show will be run as a competition with some good prizes for the best examples.

If you would like to run a charity event which can go ahead at the required social distance on one or both days, please get in touch with Sylvia at sylviaarmit@yahoo.co.uk



Faster Fibre Broadband in the Village

A number of our neighbouring villages are now able to get Hyper Fast full fibre broadband to the house. This is offering speeds from 300MB to well over 1000MB. Currently the maximum speed any household in Haslingfield can receive is around 80MB although 61% of households in the village will be on speeds of less than 50MB (some households are as slow as 0.5MB).

There is a real possibility of extending these Hyper Fast networks into Haslingfield if there is sufficient village interest.

There are currently a number of providers keen to provide full fibre broadband to Haslingfield at a competitive price. The first step would be to identify a demand within the village. Without a reasonable demand no supplier will go to the expense of creating a full fibre network around the village.

If you are a household, business or any other village organisation or society and are interested in a high speed connection, or if you have any thoughts or comments, we'd love to hear from you so we could look into possible options and answer any questions or concerns.

Please contact ben.mavely@haslingfieldparish.co.uk

Village Hall Extension Update

Work has now restarted on the new Kitchen extension and the upstairs Conference Room. Offord & Camp are forecasting completion of the project by the end of June.



Here are some images of the work in progress.

How we responded to the coronavirus lockdown

Following the government instructions on the 16 March for the vulnerable members of society to lockdown and stay inside for the next twelve weeks representatives of the Parish Council, Warden Scheme, Community Car share, Luncheon Club, Churches and Church & Village Magazine met virtually through Zoom to discuss and gather information on the safety and wellbeing of the vulnerable and elderly residents of Haslingfield Village. Their initiative led by Cllr Diana Offord was to set up a group of volunteers to maintain contact with isolated and vulnerable residents. The first step was to communicate to Haslingfield residents that the village would be recruiting volunteers by posting a notice on the village website, the Parish Council and the Haslingfield & Harlton Facebook pages and on the village noticeboards. Very quickly volunteers came forward to offer their help with shopping, calling isolating residents and offering advice and assistance where needed. By early April 84 volunteers were registered and five volunteer 'hubs' had been created to cover 218 residents across the village. A WhatsApp group was set up for each 'hub' which gave access to the volunteers assigned to that particular hub. Every hub has a co-ordinator who assigns a volunteer to a vulnerable, elderly or isolating resident as they became evident.

We are particularly grateful to the two village shops; Village Stores and Country Kitchen who have worked tirelessly to ensure they are both well stocked with food and groceries. Our village Clubs, Societies and Churches are maintaining contact with people and advising the Support Team of anyone who may need help. Everywhere we see people responding with kindness and friendship during these difficult and strange times. Haslingfield Parish Council, through the Haslingfield Support Team, continues to respond to the Covid-19 pandemic in a positive and supportive way.

Our contact details: Mobile: [07545 159828](tel:07545159828) OR Email: support@haslingfieldparish.co.uk.

Haslingfield Village Car Scheme operations during the Covid-19 lockdown

Since the beginning of the Lockdown, when most regular trips to medical appointments stopped, the Car Scheme has focussed its attention on delivering prescriptions to residents of Haslingfield and Harlton. Each Monday and Thursday evening they attempt to deliver all the medication in the "Haslingfield Box" that Harston Surgery has sent to the Village Shop. On Tuesday and Friday afternoons they go to Harston Surgery to collect and deliver (on request) any other prescriptions that weren't in the Box. During April, the Car Scheme delivered 362 prescriptions, significantly reducing the number of trips people have had to make to the Village Shop or Surgery during Lockdown. Further information: [07800 883634](tel:07800883634).



CommunityMasks4NHS



Jane Horwood and Melissa Santiago-Val, set up an NHS Fundraiser called CommunityMasks4NHS, making community-use face masks using vibrant washable cotton, from donated fabrics and materials. The fundraising and support from the village has been incredible and we have to date raised over £23,000 for NHS Charities Together in four weeks, making 4,000 masks, and recruiting a team of over 50 volunteers, many of whom are in the village. The team get involved with sourcing fabric, washing, ironing, cutting to pattern, distribution to volunteers and of course sewing. The aim of working with volunteers like this is also to increase community engagement at this time of isolation for many.

Masks are sold at a suggested donation of £4 for each mask, all of which goes straight to NHS Charities Together. If you would like to give more, that's fantastic, as all donations go to NHS. You can find out more by Liking their page on Facebook 'CommunityMasks4NHS'.

Local film company, DragonLight Films, have made a short film about the story of the initiative and how our community has worked together in a time of crisis to do something constructive and creative. You can see it on [justgiving.com/fundraising/CommunityMasksforNHS](https://www.justgiving.com/fundraising/CommunityMasksforNHS)

The Food Cupboard has been moved!

A Community Food Cupboard is now available in the grounds of the Methodist Church. We are aware that some people in the Village may need a bit of additional help with essential shopping, and we have received some enquires from people who would like to donate food (non-perishable). With this in mind, the Haslingfield Support Team and Haslingfield School have set up a Food Cupboard.

- If you need food items, toiletries or household goods you can visit the Food Cupboard and pick up what you need.
- If you have food items to donate (non-perishable and in-date only please), or other grocery items, please pop the items in a bag in the bottom of the Cupboard. To practice good hygiene, the items will be wiped down and checked before placing on the table.

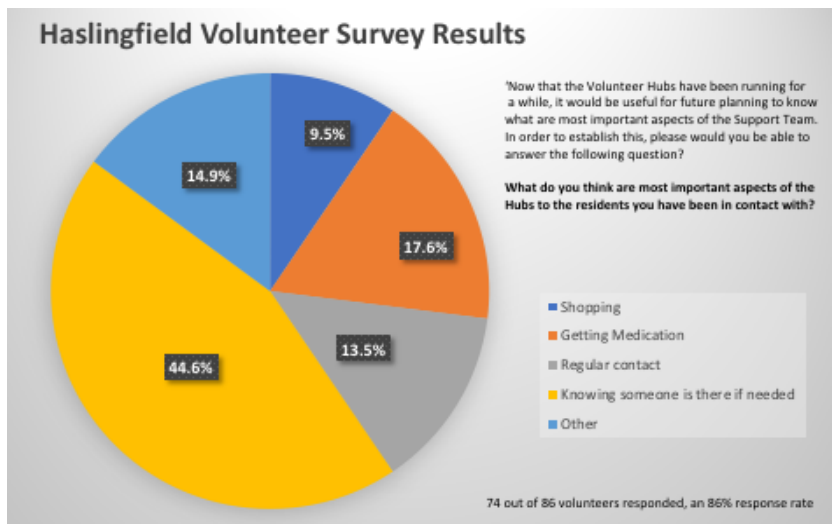
We hope that by keeping everything informal we can help each other out. Some of the Cambridge City Food Banks are now re-opening but transport to those locations isn't easy, so we hope that a local Food Cupboard may help

Email: support@haslingfieldparish.co.uk

Tel: 07545 159828



Haslingfield Support Team Volunteer Survey



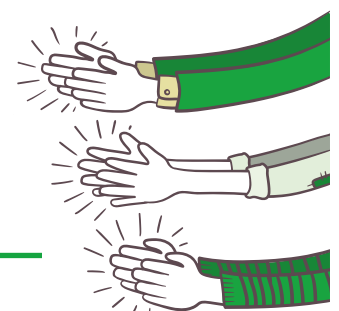
Pie Chart prepared by Seb Golden, Year 6 Haslingfield School

A recent poll of our Volunteers has been carried out in which they indicated what they felt the residents appreciated the most. By far, the highest score was knowing that someone was there for them if they needed it. Organising medication featured; this has been helped by the successful prescription delivery service by the Community Car Share. Shopping came in lower, probably because of the good delivery service in the village and neighbours/ family sharing delivery slots from supermarkets.

A thank you message from the Parish Councillors

We would like to send our sincere thanks to all the Volunteers who have been supporting the residents of Haslingfield since the arrival of the Covid-19 pandemic. We have been overwhelmed by the speed at which people have come forward to help with a sense of dedication, support and a willingness to carry out practical tasks.

Support to the vulnerable and elderly in the Village will still be needed over the coming weeks as lockdown restrictions are gradually relaxed, and we hope that some of you will be able to carry on Volunteer work in the Village when life returns to some form of normality



Haslingfield villagers come out to Clap for the NHS on a Thursday evening



VE Day Celebrations in Haslingfield

The sun shone and our villagers came out of their houses to socially distance with neighbours and celebrate the 75th Anniversary of VE Day.

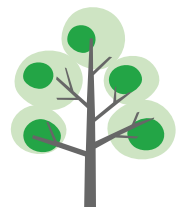


Annual Parish Meeting May 2020

Due to the Coronavirus lockdown and the uncertainty as to when we will be able to have face to face meetings again the Parish Council have taken the decision to postpone the Annual Parish Meeting until later this year. The minutes of the Annual Parish Meeting of 2019 were approved at the virtual Haslingfield Parish Council Meeting on the 8 June and have been posted on the village noticeboards, website and Parish Council Facebook page.

Please can we have your help

Trees and hedges around the village are growing rapidly. Please LIGHTLY trim any growth on your property so that branches and brambles do not overhang the footpath which is for both pedestrian safety and to allow maximum pedestrian passing space on the footpath. Please do remember to check the hedge first to ensure that no birds and nests are disturbed!



Your Current Parish Councillors are:

Jenny Jullien – Chairman, Tony Adcock – Vice Chairman, Helen Brown, Clive Blower, Simon Duke, Andrew Gillies, Lucian Hatfield, Ron van der Hoorn, Ben Mavely, Diana Offord, David Revell

Haslingfield Parish Council welcomes communication from all its residents.

If you have any comments/questions on this Newsletter or any other local issue, please contact Haslingfield Parish Clerk (Jacqui Cressey) in the first instance by emailing clerk@haslingfieldparish.co.uk or calling 01223 870269