

A decorative graphic on the left side of the slide, consisting of a series of vertical blue bars of varying heights connected by horizontal lines, resembling a stylized railway track or a fence.

A proposed new  
station south  
of Cambridge

A decorative graphic on the right side of the slide, identical to the one on the left, consisting of a series of vertical blue bars of varying heights connected by horizontal lines, resembling a stylized railway track or a fence.

# The Need

- Cambridge City Council have plans for 14,000 new homes between 2011 and 2031;
- The Cambridge Local Plan 2018 identifies the Cambridge Biomedical Campus (including Addenbrooke's Hospital) and the southern fringe as an area of major change and targeted for growth;
- The Royal Papworth Hospital relocated to the Biomedical Campus in 2019;
- AstraZeneca's new research and development centre will open in 2020; and
- The Biomedical Campus is expected to accommodate 27,000 jobs by 2031.



# Location

## Proposed location of a new station south of Cambridge

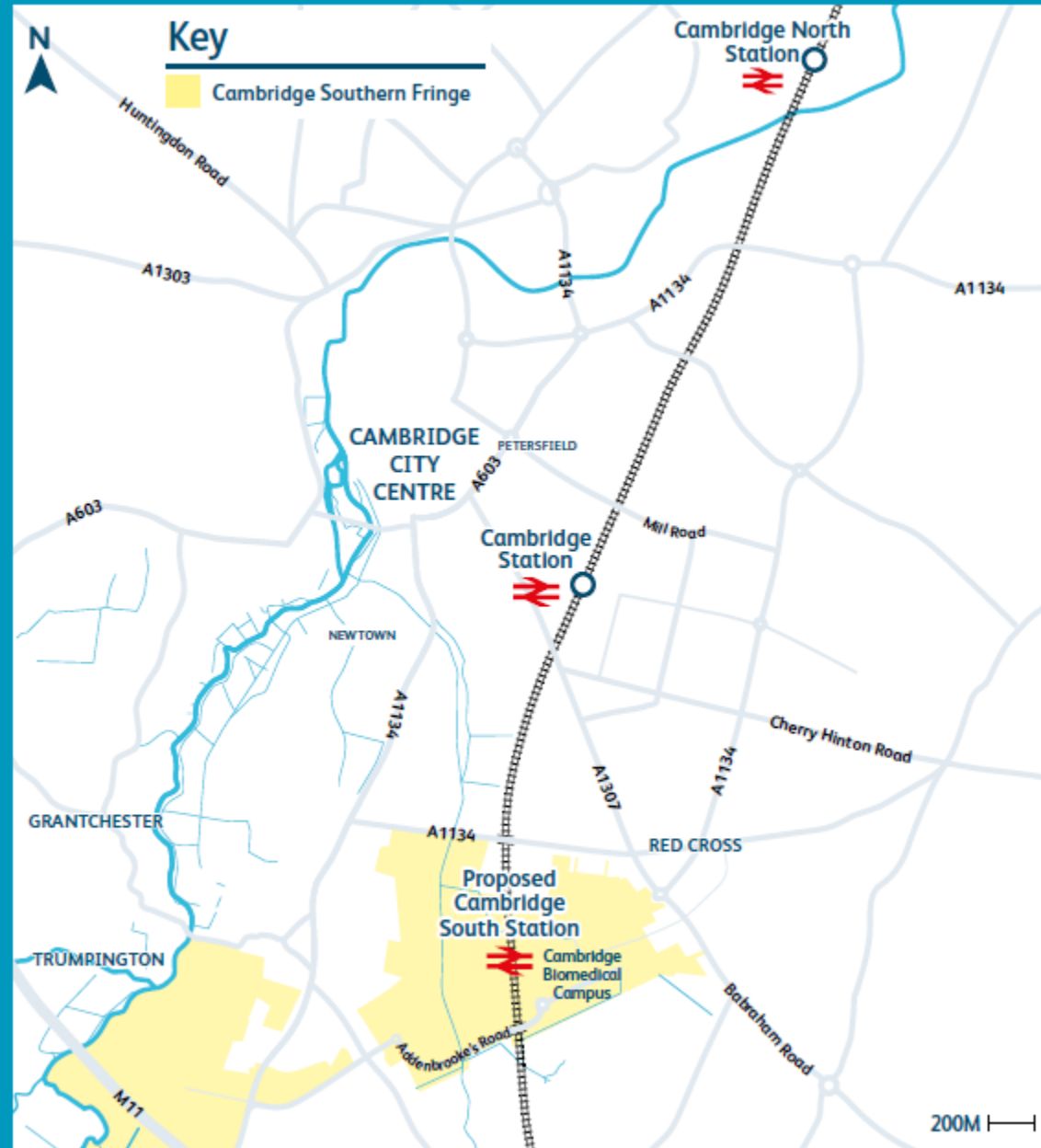


Image for illustrative purposes only.

# Development Partners

- Department for Transport;
- Cambridgeshire and Peterborough Combined Authority;
- Greater Cambridgeshire Partnership; and
- AstraZeneca UK.



# The Project

- Four platforms, with step-free access via a footbridge and lifts;
- Each platform will have shelter for waiting passengers as well as seating;
- Ticket office and ticket vending machines will also be provided, along with automatic ticket gates;
- Taxi and passenger drop off facilities;
- Other station facilities are expected to include retail/catering unit, waiting room and toilets; and
- Cycle and Blue Badge parking.



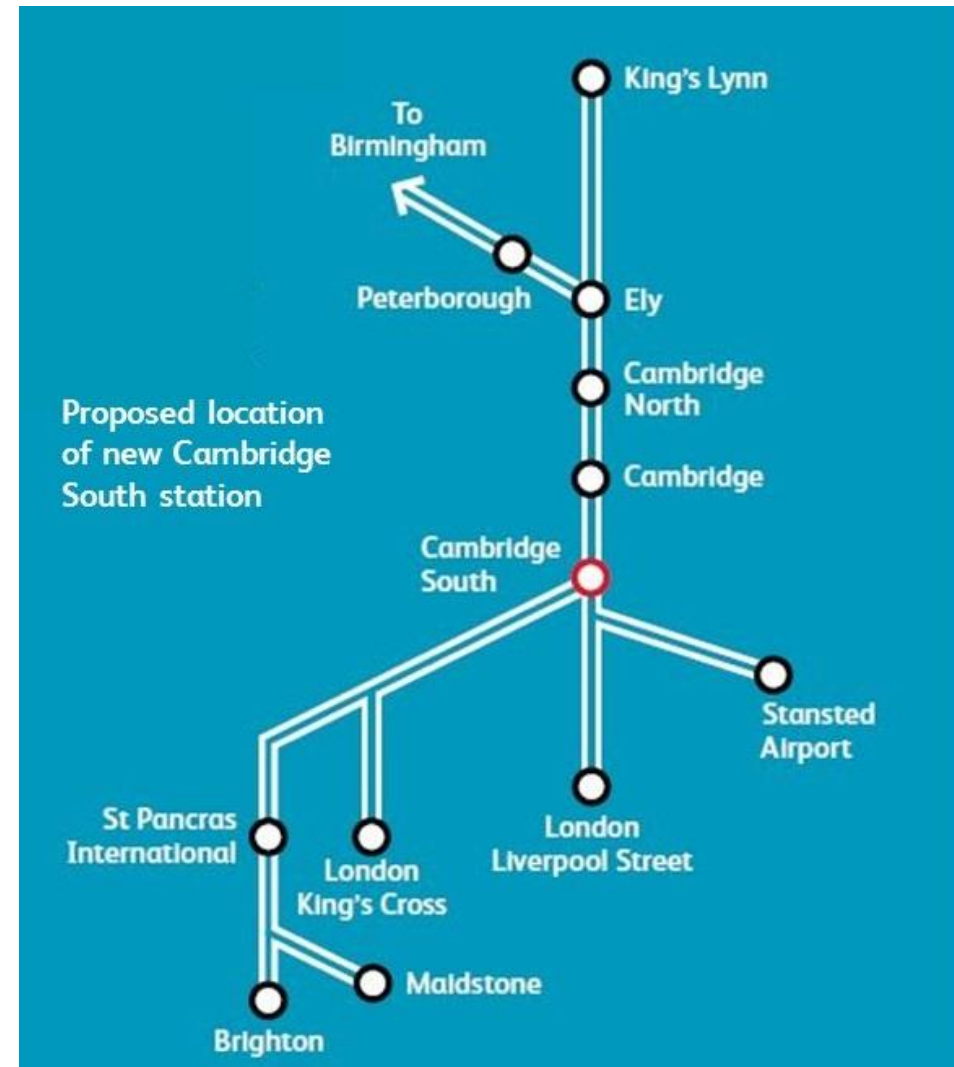
# Main construction works

- Proposed main construction compound (temporary) located to the west of station site
- Satellite construction compounds (being investigated)
- The local road network would be used to transport construction materials, however transport via existing railway is also being considered
- Main interventions could include:
  - Works to Nine Wells Bridge carrying Addenbrooke's Road
  - Works to bridge over Nine Wells Stream Conduit
  - Diversion of drain to east of railway south of Nine Wells Bridge
  - Reconstruction of Addenbrooke's Bridge carrying Guided Busway (Northern location option)
  - Reconstruction of Long Road Bridge (not all options)



# Train Services

New infrastructure would be constructed to enable a mixture of services to call at the new station providing access to key destinations. This diagram shows an indicative selection of these destinations. Please note that the calling pattern has not been finalised and is based on current franchised services.



# TWAO for Cambridge South station

- **Statutory Powers** include: Transport and Works Orders and Development Consent Orders\* are used when both land, and/or rights, and consents are required in one process for major/complex projects. (\*except Wales & Scotland)
- **Statutory Powers can include provision for:** compulsory acquisition of land and rights over land; extinguishment or amendment of rights; highways, planning and other consents; diversions or removal of utilities; protection against future statutory nuisance claims.

Documents needed for a proposal involving works are:

- Draft order and explanatory memo;
- A concise statement and the aims of the proposals;
- A report summarising the consultations carried out by the applicant;
- Plans and cross sections;
- An Environmental Statement;
- A book of reference, including names of owners and occupiers of land to be bought compulsorily;
- A planning statement;
- A design and access statement;
- The estimated costs of the proposed works; and
- The funding arrangements (funding statement).



# Environmental Impact Assessment

The project is EIA development

**GRIP 2:** baseline surveys and desk top analysis

Consultation: Historic England (for SM), City and South Cambs EHOs, consultation with all stakeholders

**GRIP 3:** scoping, scoping report, EIA – ES ongoing consultation with stakeholders on preferred scheme and mitigation through design, plus liaison on CoCP



# High-level Programme

GRIP 2            Concept Design Development, ends 28 February 2020  
GRIP 3            Outline Business Case (OBC) Development

- Round One Consultation 20 January 2020 until 2 March 2020
- Round Two Consultation 2020
- Review of Order and TWAO submission ready for 2021



# Station Location Options

Northern Option

Central Option

Southern Option

- Station outline
- Construction
- Land acquisition
- Environmental designations
- Planning designations
- Pedestrian access
- Cycle access
- Access for taxis and drop-off
- Potential for integration with other transport services

# Northern location – main works

## Option 1: Northern location – main works

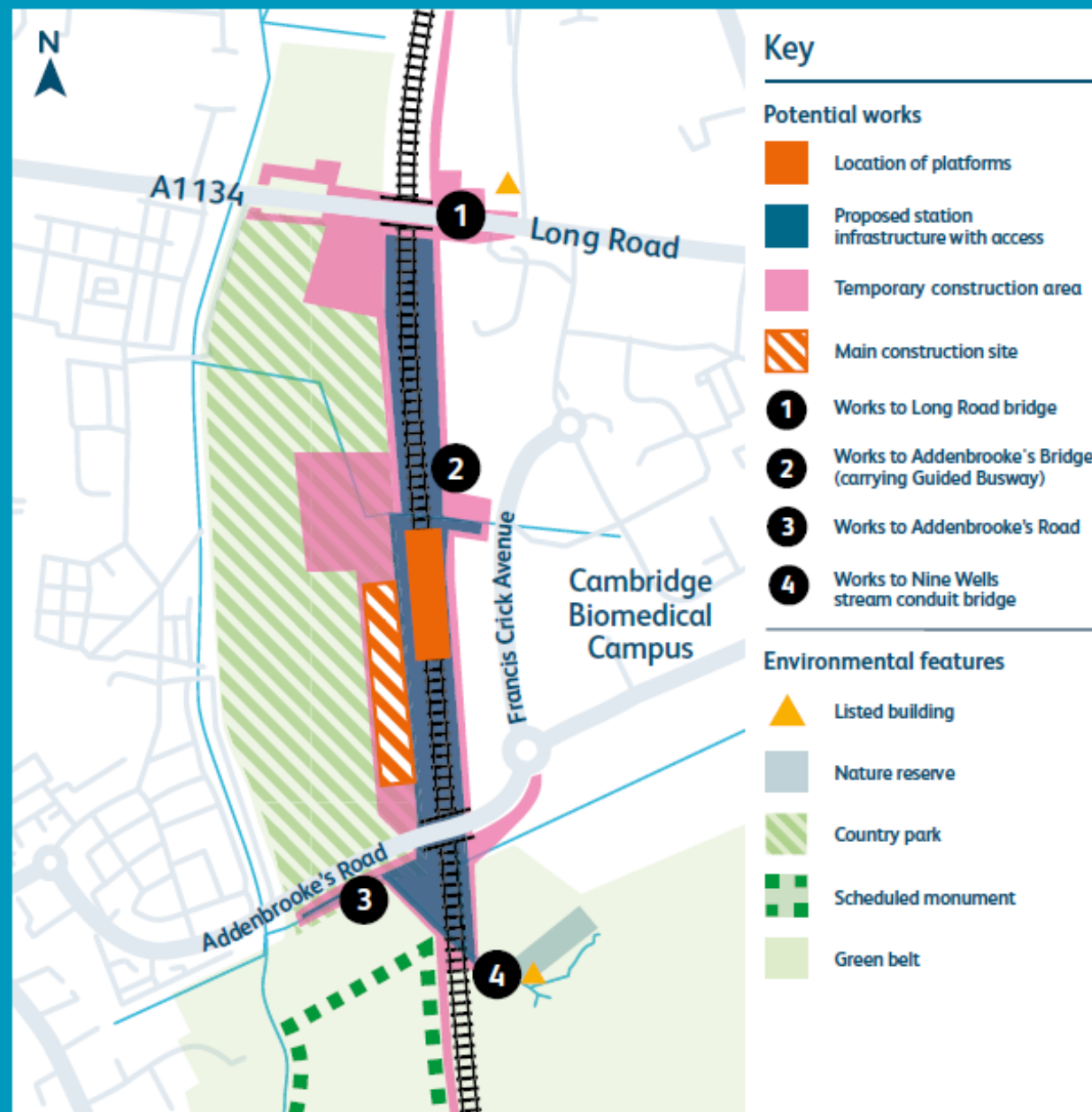


Image for illustrative purposes only. Not to scale.

# Northern location – potential access

## Option 1: Northern location – potential access

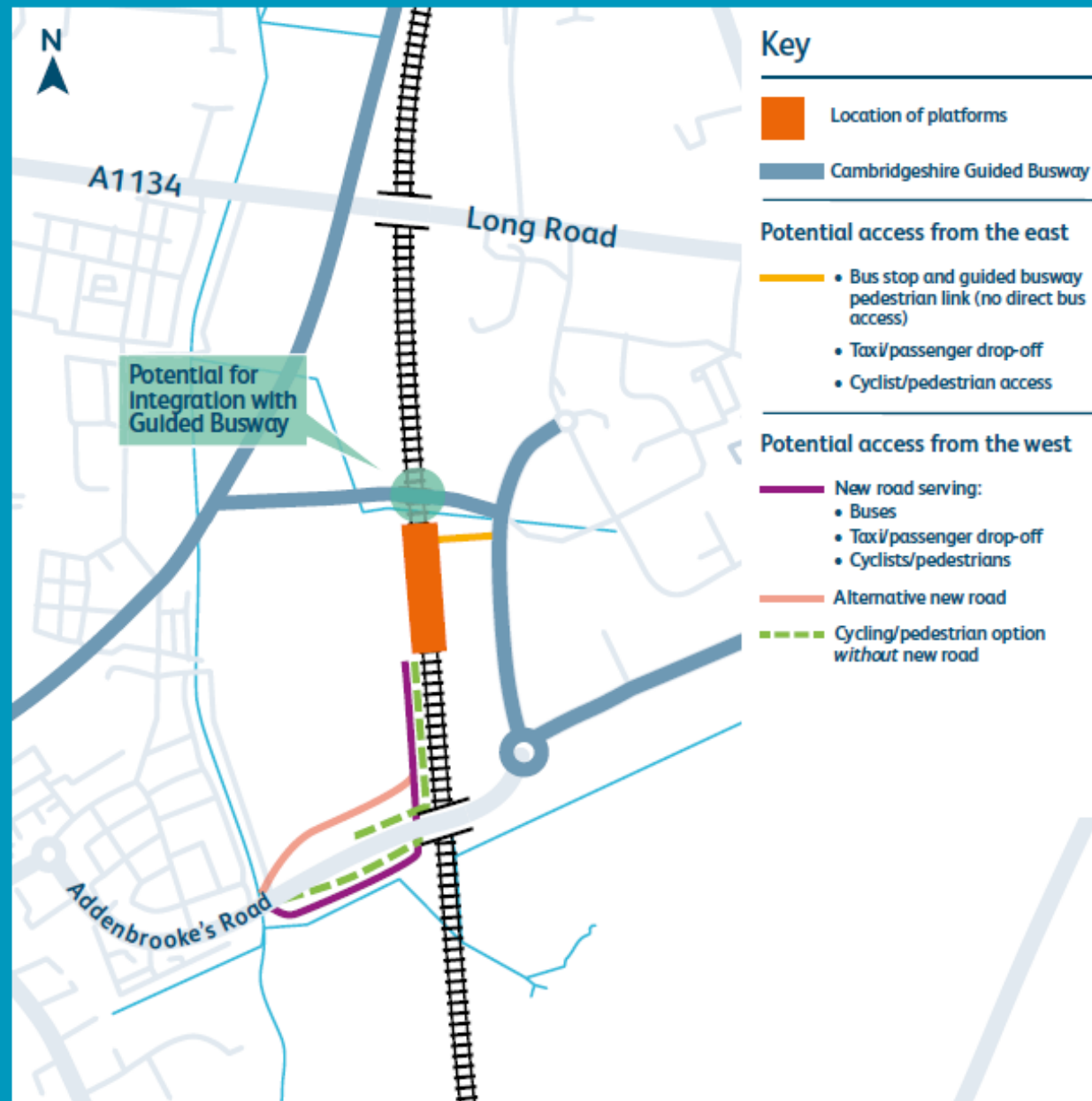


Image for illustrative purposes only. Not to scale.

# Central location – main works

## Option 2: Central location - main works

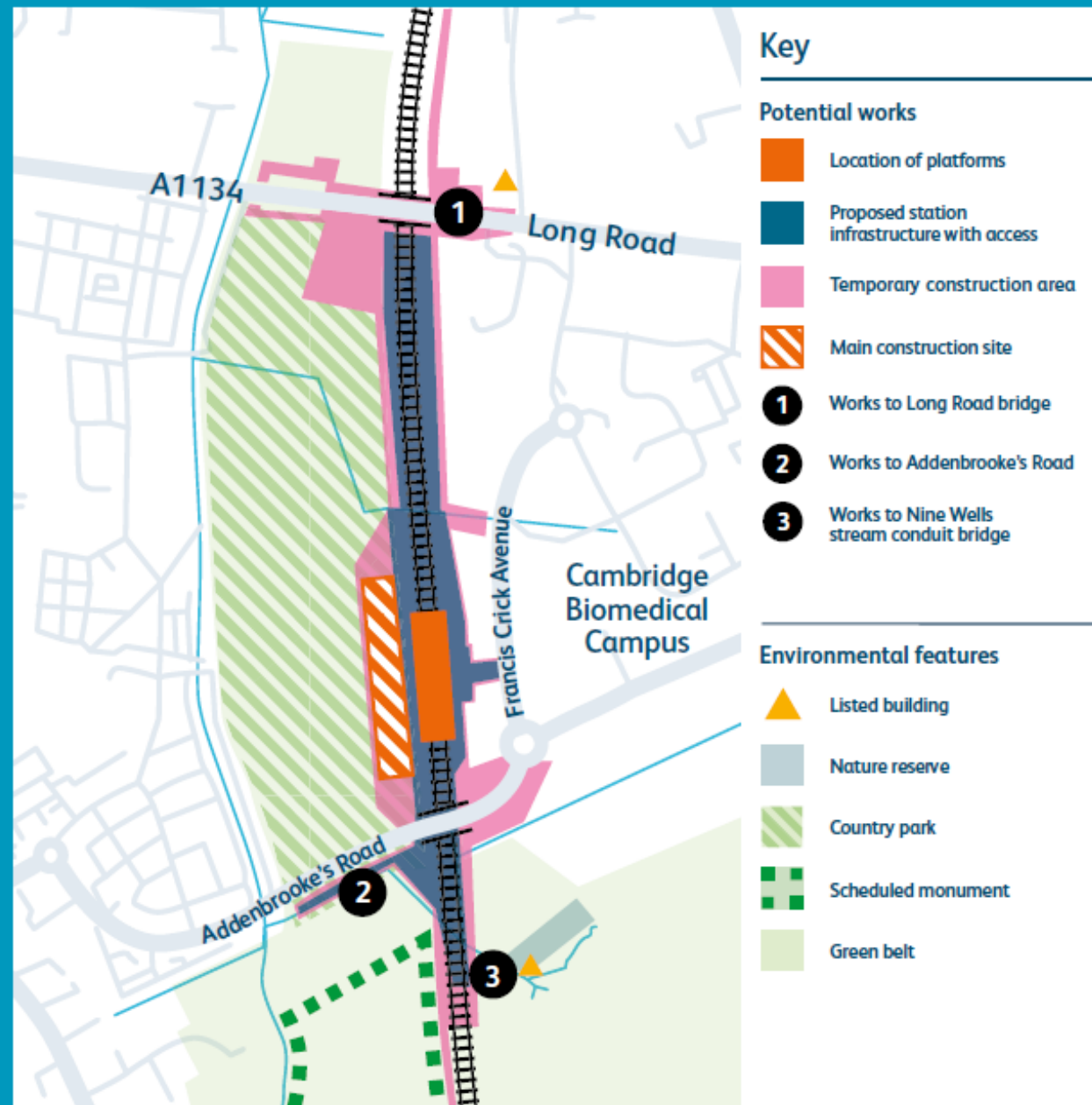


Image for illustrative purposes only. Not to scale.

# Central location – potential access

## Option 2: Central location – potential access

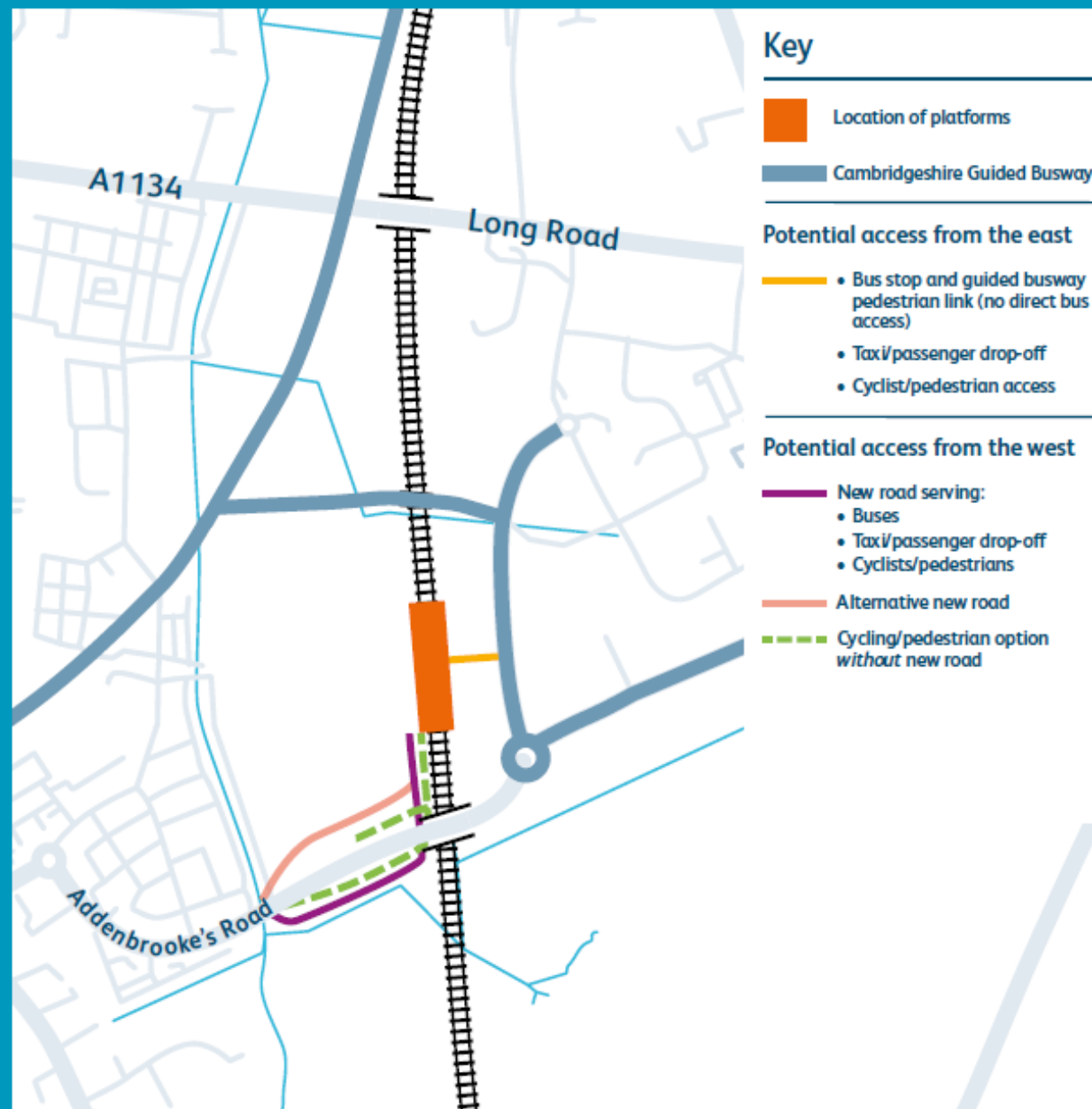


Image for illustrative purposes only. Not to scale.

# Southern location – main works

## Option 3: Southern location - main works

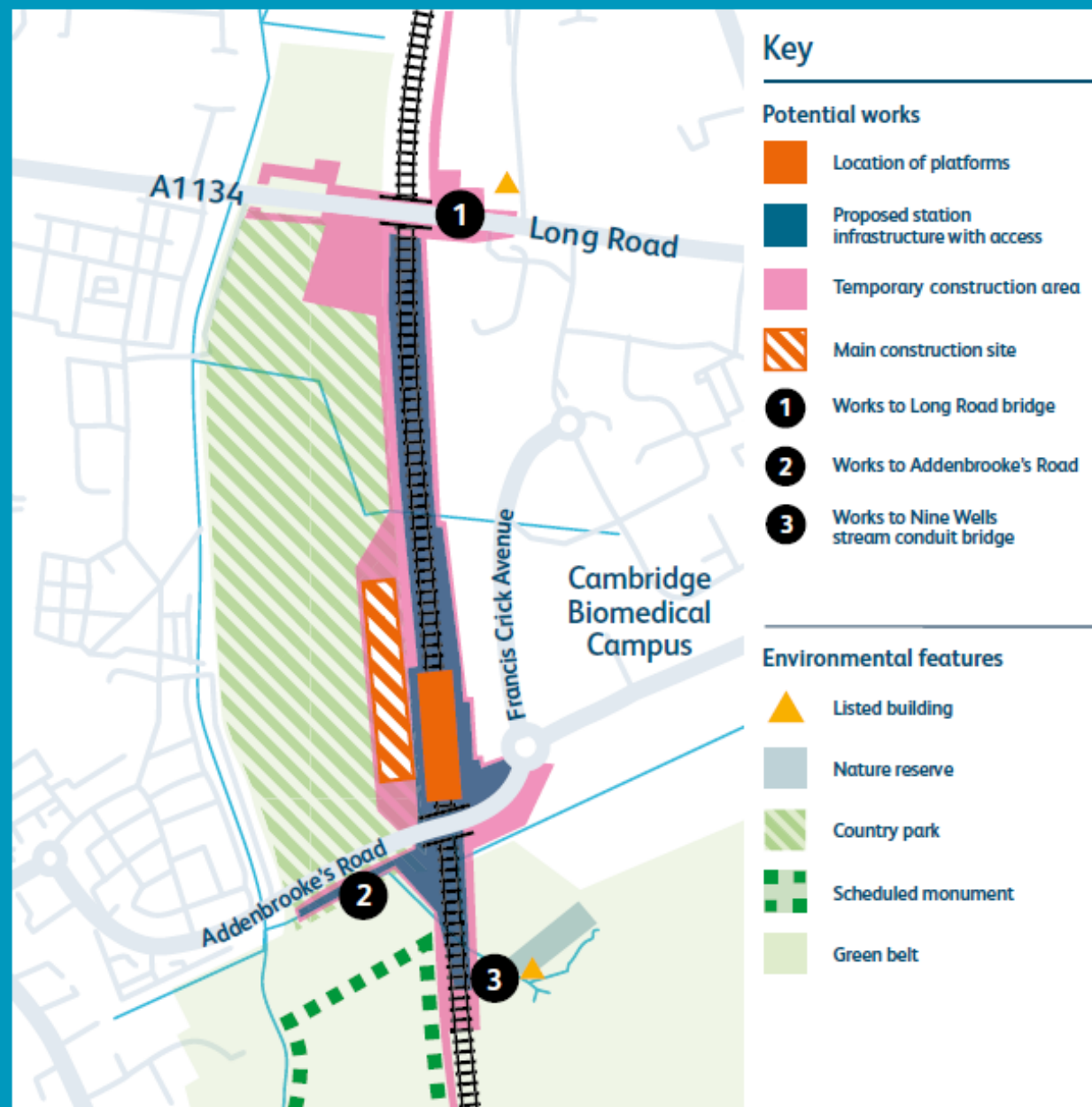


Image for illustrative purposes only. Not to scale.



# Southern location – potential access

## Option 3: Southern location – potential access

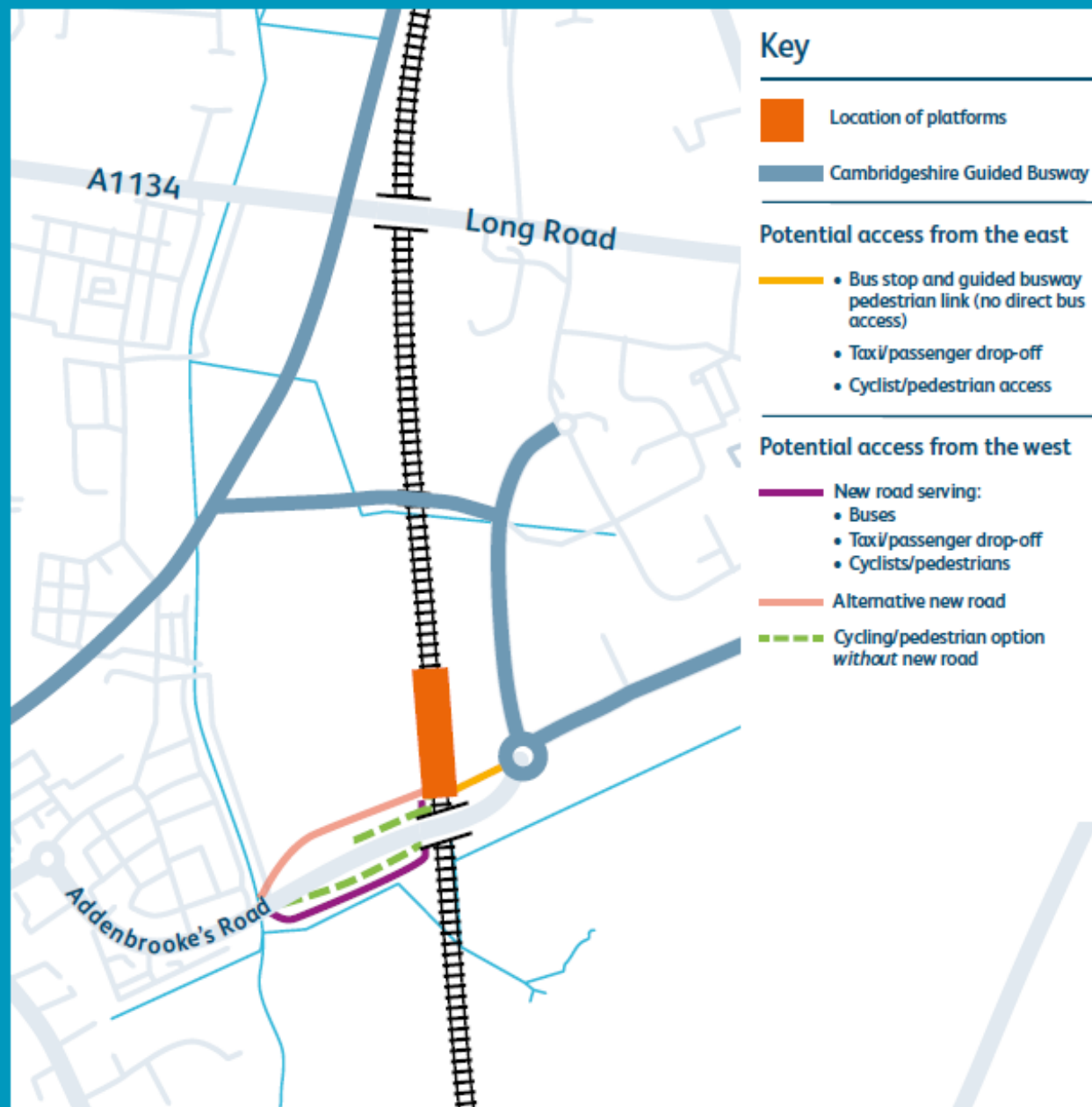


Image for illustrative purposes only. Not to scale.

# Round One Consultation

- Adopt a multi-channel approach to promote and seek feedback through traditional media (paid for newspapers), online and social media
- Identified nine venues to hold consultation events in key or high footfall locations ie on Biomedical Campus, Royal Papworth Hospital, in Trumpington, Great Shelford, Grantchester, Stapleford and Cambridge City centre
- Distribution of more than 9,000 leaflets to households identified in Consultation Zone and 40,000 leaflets handed out at key stations along the route.
- Feedback encouraged via consultation leaflet form, online via Consultation Hub, via email, via post and at events
- 6 week consultation period starts 20 January and ends 2 March 2020

